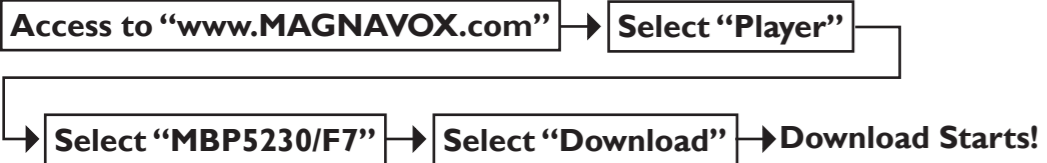


SETUP MANUAL



MBP5230/F7

See the Online Manual for details: www.MAGNAVOX.com
 Funai Electric is now innovating a brand-new solution to our customers.
 Our Online Manual is available at: www.MAGNAVOX.com



If you have any questions or issues with the product, please check the Troubleshooting section of the Manual. Additional support is required please contact Customer Service 1-800-605-8610 or Online Support visit: www.magnavox.com/support

MAGNAVOX is a registered trademark of Philips Electronics North America Corporation and is used by Funai Electric Co. Ltd. and Funai Corporation, Inc. under license from Philips Electronics North America.

For product recycling information, please visit - www.magnavox.com

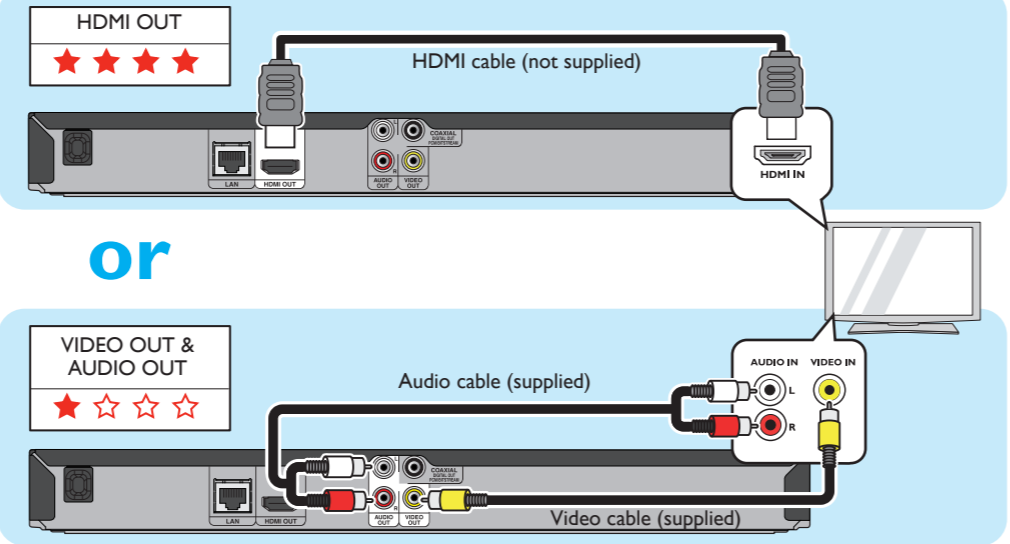


MAGNAVOX

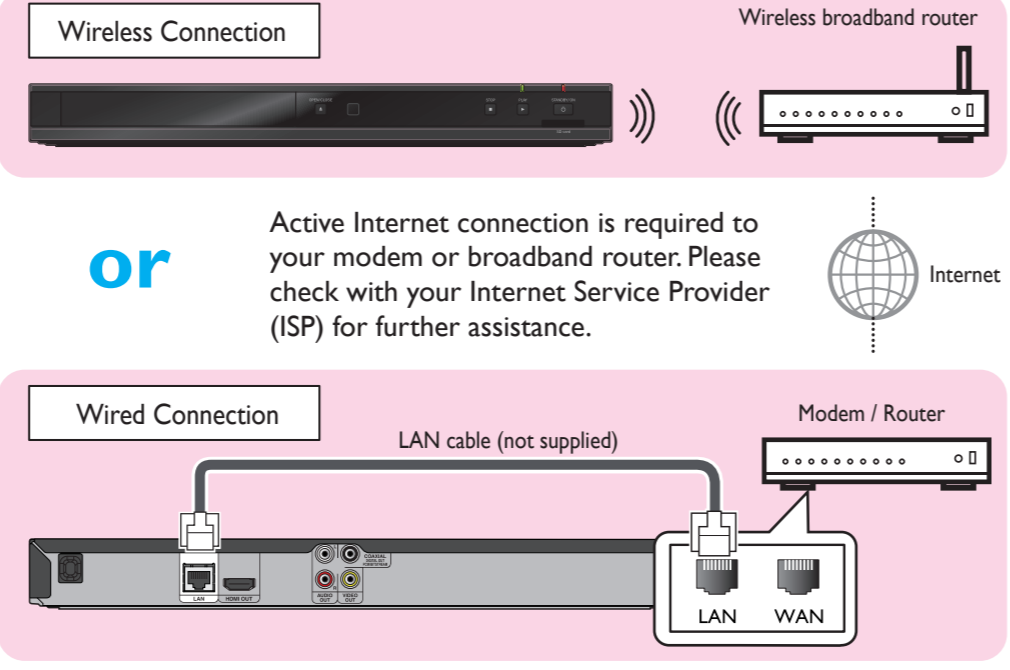
© 2011 Funai Electric Co., Ltd.
 Printed in China
 ESW00UD
 1VMN30533 ★★★★★

1 CONNECTIONS

Connection to the TV

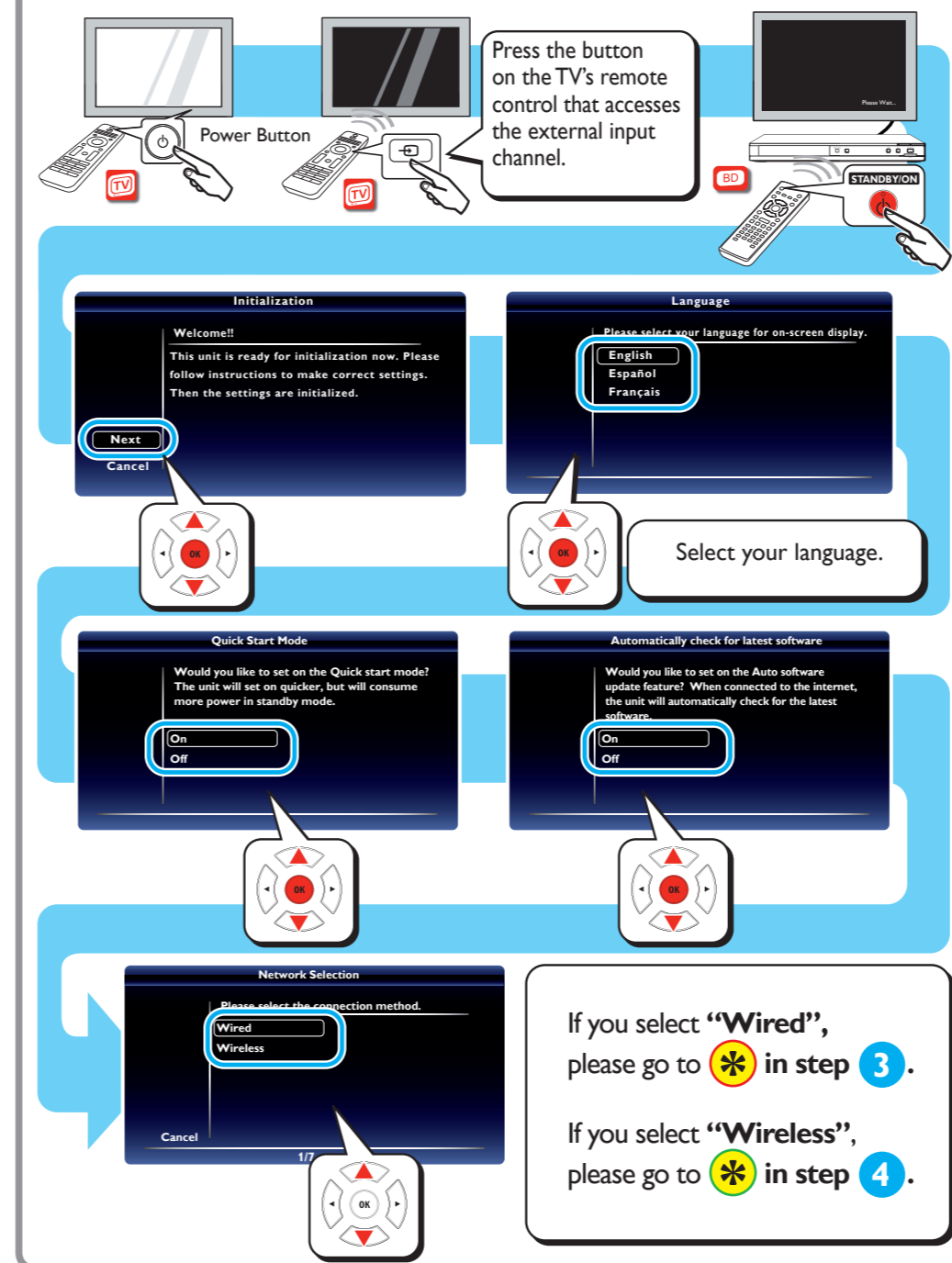


Wired and Wireless Connections



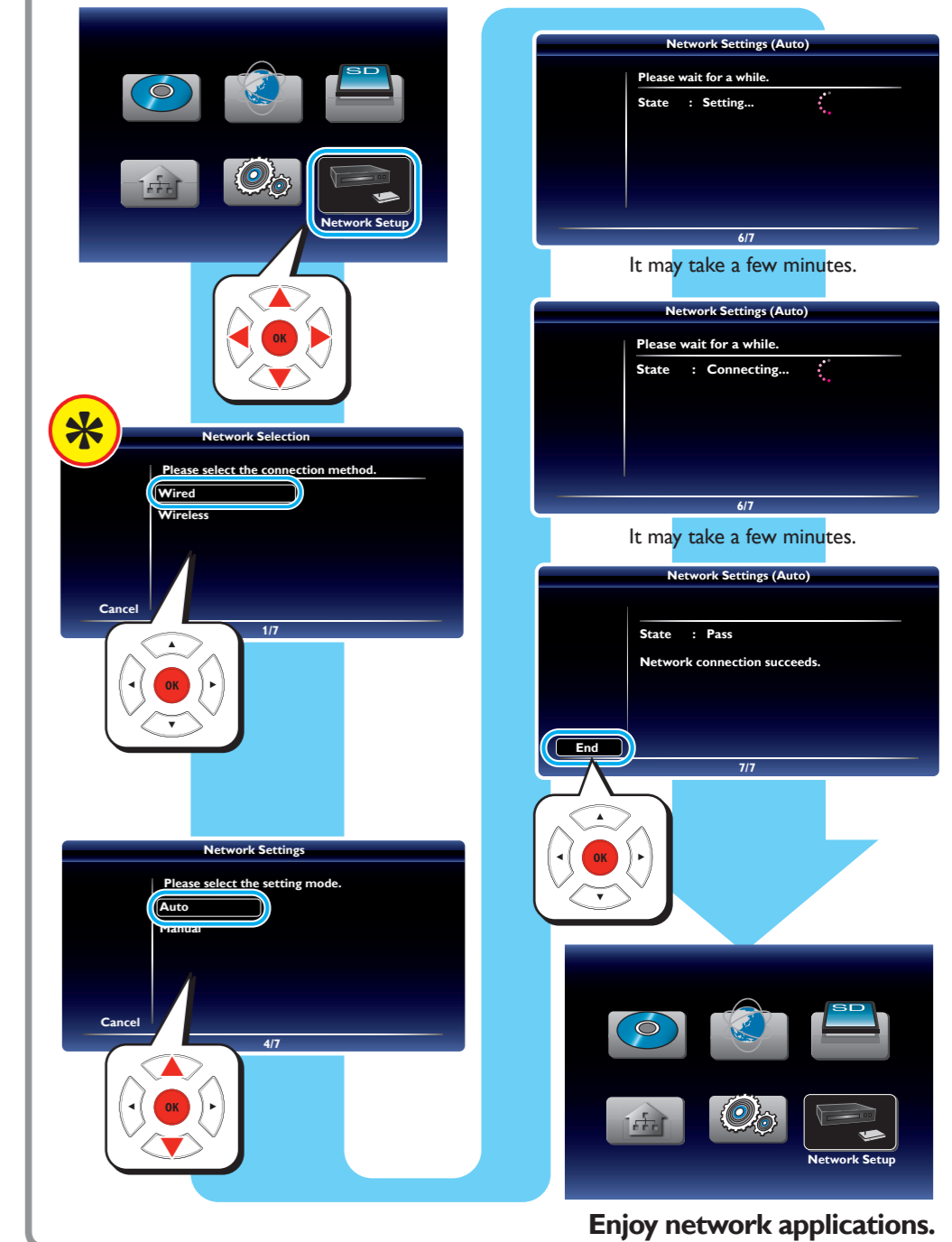
See the Online Manual for details: www.MAGNAVOX.com

2 INITIAL SETUP



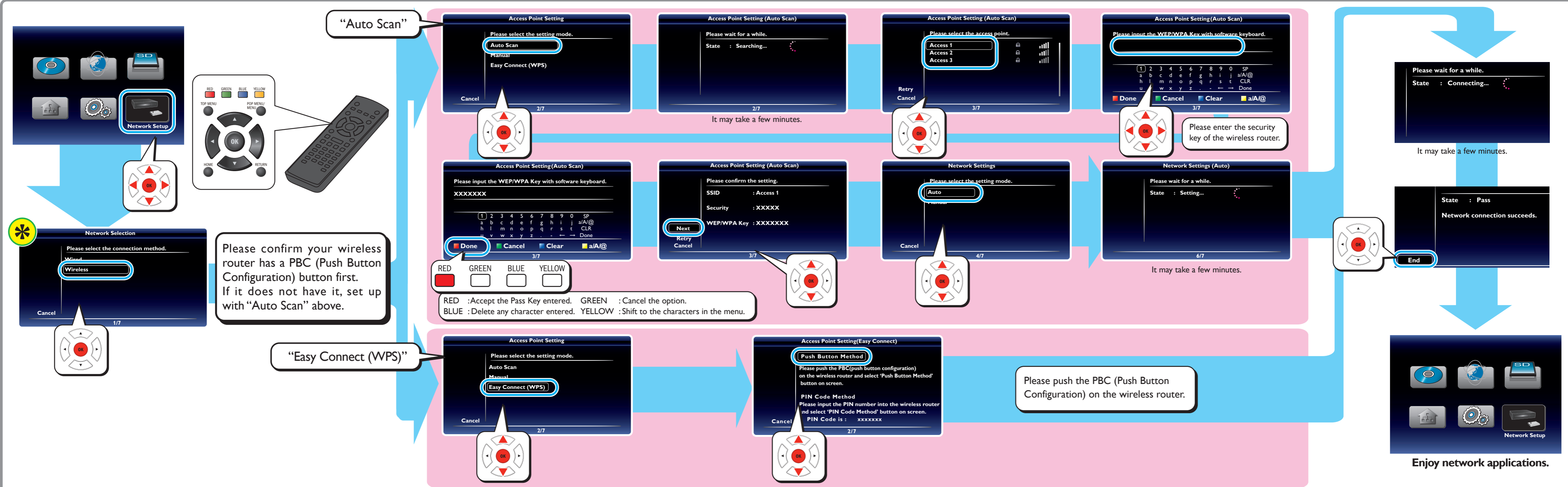
See the Online Manual for details: www.MAGNAVOX.com

3 WIRED SETUP



See the Online Manual for details: www.MAGNAVOX.com

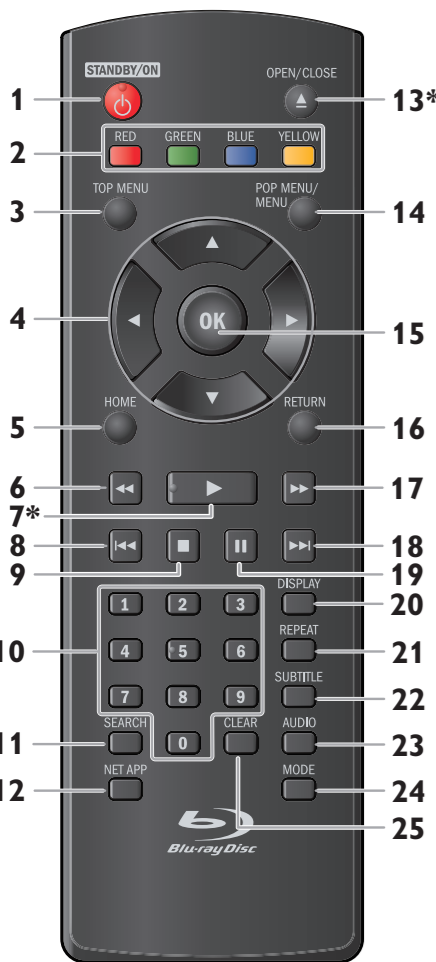
4 WIRELESS SETUP



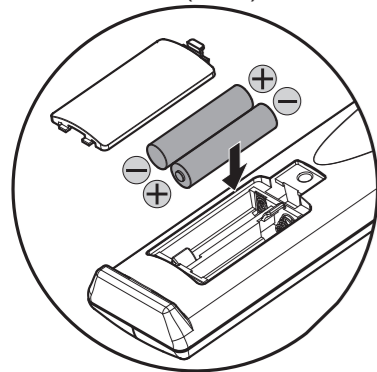
If you select “Manual” or “PIN Code Method”, please see the Online Manual for details.

See the Online Manual for details: www.MAGNAVOX.com

REMOTE CONTROL (ENGLISH)



INSERT BATTERIES
Install 2 AAA (1.5V) batteries



(*) The unit can also be turned on by pressing these buttons.

- 1. STANDBY/ON** button
Press to turn on the unit, or to switch the unit into standby mode. (To completely turn off the unit, you must unplug the AC power cord.)
- 2. RED / GREEN / BLUE / YELLOW** buttons
Press to activate shortcut keys on some BD-video functions. When file list is shown, press to switch between pages.
- 3. TOP MENU** button
Blu-ray Disc™: Press to display the top menu.
DVD: Press to display the title menu.
- 4. ▲/▼/◀/▶** buttons
Press to select items or settings.
- 5. HOME** button
Press to display the home menu.
- 6. ◀◀ (reverse)** button
During playback, press to fast reverse the playback.
- 7. ▶▶ (play)** button*
Press to start playback or resume playback.

- 8. ◀◀ (skip)** button
During playback, press once to return to the beginning of the current title, chapter, track or file. During playback, press twice to return to the previous title, chapter, track or file.
- 9. ■ (stop)** button
Press to stop playback.
- 10. Number** buttons
Press to select a chapter during playback.
- 11. SEARCH** button
Press to display the search menu.
- 12. NET APP** button
Press to display the network application menu.
- 13. OPEN/CLOSE** button*
Press to open or close the disc tray.
- 14. POP MENU/MENU** button
Blu-ray Disc™: Press to display the pop menu.
DVD: Press to display the disc menu.
- 15. OK** button
Press to confirm or select menu items.
- 16. RETURN** button
Press to return to the previously displayed menu or screen function.

- 17. ▶▶ (forward)** button
During playback, press to fast forward the playback. When playback is in pause, press to slow forward the playback.
- 18. ▶▶▶ (skip)** button
During playback, press to skip to the next chapter, track or file. When playback is in pause mode, press to forward the playback picture by picture.
- 19. || (pause)** button
Press to pause playback.
- 20. DISPLAY** button
Press to display the on-screen display menu.
- 21. REPEAT** button
Press to select repeat mode.
- 22. SUBTITLE** button
Press to select subtitles on a disc.
- 23. AUDIO** button
Press to select the audio channel (such as audio languages) on a disc.
- 24. MODE** button
During playback, press to display the play menu.
- 25. CLEAR** button
Press to clear the information once entered.

Note

- When the unit receives a signal from the remote control, STANDBY/ON indicator on the front panel flashes.

See the Online Manual for details: www.MAGNAVOX.com

TROUBLESHOOTING

Problem	Tip
No power.	<ul style="list-style-type: none"> Check if the AC cord is properly connected. Unplug the AC cord once, and wait for 5-10 seconds and then plug it in again.
No sound or picture.	<ul style="list-style-type: none"> Check if the connected TV is turned on. Check if the connections are made securely and correctly. Check whether the connected TV or other device supports HDCP. (This unit will not output a video signal unless the other device supports HDCP.) Check whether the output format of this unit (HDMI FORMAT) matches the supported input format of the other connected device. Press and hold [PLAY] on the front panel for 5 seconds to change the setting back to its default.
No reaction to the remote control.	<ul style="list-style-type: none"> Connect the product to the power outlet. Point the remote control at the product. Insert the batteries with the correct polarity. Insert new batteries in the remote control.
No audio / video signal on the display device via HDMI cable.	<ul style="list-style-type: none"> If the unit is connected to an unauthorized display device with an HDMI cable, the audio / video signal may not be output. Perform an HDMI cable hotplug, wherein you disconnect the HDMI cable from the TV and this unit and then reconnect it to both the devices while they are powered on. Ensure that your HDMI cable is certified.
No high-definition video signal on the TV screen.	<ul style="list-style-type: none"> Does the disc contain high-definition video? High-definition video is not available when the disc does not contain it. Does the TV support high-definition video? High-definition video is not available when the TV does not support it.
No audio signal from the loudspeakers of the TV.	<ul style="list-style-type: none"> Assign the audio input of the TV to the corresponding video input. Ensure that the TV speakers are turned on in the TV menu. Ensure that the TV speakers are not muted.
No audio signal from the loudspeakers of the audio system.	<ul style="list-style-type: none"> Turn on the audio system. Set the audio system to the correct external audio input. Increase the volume level of the audio system.
Distorted picture.	<ul style="list-style-type: none"> Sometimes a small amount of picture distortion may appear. This is not a malfunction. Connect this unit directly to the TV. If the audio / video cables are connected to a VCR, pictures may be distorted due to the VCR copyright protection system.
Completely distorted picture or black / white picture with Blu-ray Disc™ / DVD.	<ul style="list-style-type: none"> Make sure the disc is compatible with this unit.
No sound or distorted sound.	<ul style="list-style-type: none"> Adjust the volume. Check if speakers are connected correctly. Check the HDMI connections. Check the settings in "Audio Out" menu.
Picture freezes momentarily during playback.	<ul style="list-style-type: none"> Check the disc for fingerprints / scratches and clean with a soft cloth wiping from center to outer edge. Clean the disc.
Cannot play back a disc.	<ul style="list-style-type: none"> Make sure that the product supports the disc. Check the region code of the disc. This unit supports the following region codes. <ul style="list-style-type: none"> Blu-ray Disc™: "A" DVD: "ALL" or "1" Clean the disc.
Cannot connect to the network.	<ul style="list-style-type: none"> Check if the network connection is properly made. Turn on the modem or router. Check the network settings. Check if the router and/or modem is correctly connected. Check the BD-Live™ setting in "Manual" setup. When connecting directly to a modem via a LAN cable, you might need to power cycle the modem to reset the settings in the modem.
Cannot use the wireless connection.	<ul style="list-style-type: none"> Once you have activated the wireless connection please wait 30 seconds for the connection to be established after turning on the unit, before trying to access network features such as BD-Live™, DLNA home network server, Netflix, Film Fresh, Blockbuster, VUDU and Pandora.

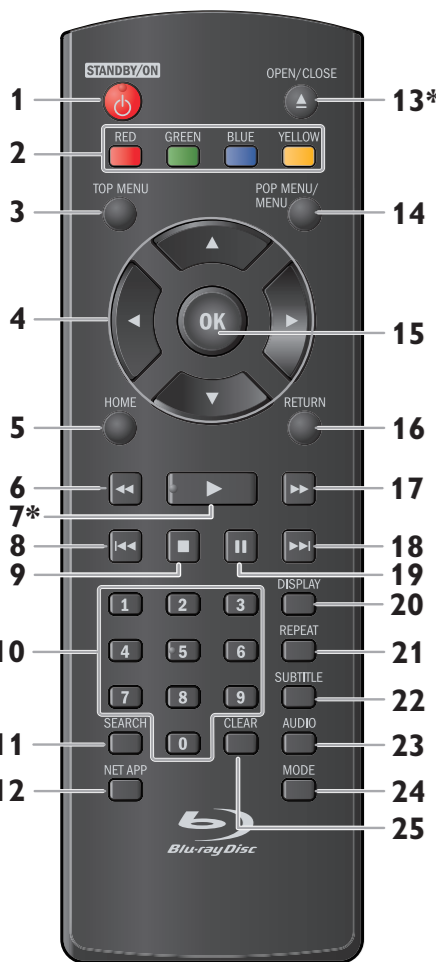
Problem	Tip
Cannot connect to the network while my PC is connected to the network.	<ul style="list-style-type: none"> Check the content of your Internet service contract to see if your Internet Service Provider prevents multiple terminals connecting at the same time.
Cannot use the BD-Live™ function or download of data does not perform properly.	<ul style="list-style-type: none"> Insert an SD Memory Card before inserting the disc. Insert an SD Memory Card with enough capacity (1GB or more). Check if an SD Memory Card is correctly inserted. Make sure the write-protect switch on the SD Memory Card is not enabled.
Folder or files stored on DLNA home media server are not displayed in the file list or cannot be played back.	<ul style="list-style-type: none"> Check the setting on your home media server. (Refer to the user manual of the home media server.) Check the network connection and settings.
Cannot use Netflix feature.	<ul style="list-style-type: none"> Netflix is available only in the United States. Check if the network connection is properly made. Visit netflix.com/magnavox on your PC and become a Netflix member.
Cannot add movies or TV episodes to the instant Queue.	<ul style="list-style-type: none"> Visit netflix.com on your PC. Adding movies or TV episodes may only be done on the PC, not using this unit.
Even though the speed of the Internet connection improves during playback, the picture quality of Netflix streaming movie does not improve.	<ul style="list-style-type: none"> The picture quality does not change during playback. The picture quality differs depending on the speed of Internet connection at the time the streaming video is loading.
The picture quality of streaming movie (Netflix, Film Fresh or Blockbuster) is poor.	<ul style="list-style-type: none"> Check the speed of your Internet connection. Contact your Internet service provider. (You may need to improve the broadband speed.)
Streaming movie (Netflix, Film Fresh or Blockbuster) often stops or starts buffering during playback.	<ul style="list-style-type: none"> Contact your Internet service provider. (You may need to improve the broadband speed.)
Cannot use Film Fresh / Blockbuster feature.	<ul style="list-style-type: none"> Film Fresh / Blockbuster is available only in the United States. Check if the network connection is properly made. Visit filmfresh.roxionow.com/Login (Film Fresh) or www.blockbuster.com/auth/login (Blockbuster) on your PC and create an account.
Cannot use the VUDU service.	<ul style="list-style-type: none"> Check if the network connection is properly made. VUDU is available only in the United States.
Cannot rent or buy movies / TV shows on VUDU.	<ul style="list-style-type: none"> You need to activate the VUDU account. Log into your account at http://myvudu.com and check your payment information.
The picture quality of VUDU movie is poor.	<ul style="list-style-type: none"> Check the speed of your Internet connection. You need speeds of at least 8 Mbps to this player for high quality uninterrupted playback.
VUDU movie often stops or starts buffering during playback.	<ul style="list-style-type: none"> Contact your Internet service provider to troubleshoot your Internet connection for speed and line quality. Consistent line quality and speed are very important for Internet video playback.
Cannot use Pandora feature.	<ul style="list-style-type: none"> Check if the network connection is properly made. Pandora is available only in the United States. You must create a Pandora account and activate this unit.

SERVICING

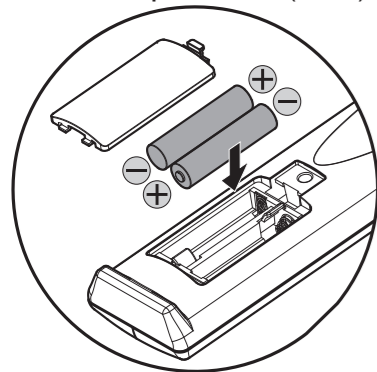
- Please refer to relevant topics on "TROUBLESHOOTING" in the Online Manual before returning the product.
- If this unit becomes inoperative, do not try to correct the problem by yourself. There are no user-serviceable parts inside. Eject the disc (if possible), remove the SD Memory Card, place the unit into the standby mode, unplug the power plug, and please contact: 1-800-605-8610 or visit: www.magnavox.com/support

See the Online Manual for details: www.MAGNAVOX.com

MANDO A DISTANCIA (ESPAÑOL)



INTRODUZCA PILAS
Instale dos pilas AAA (1,5V)



(*) La unidad también se puede encender pulsando estos botones.

- 1. Botón STANDBY/ON**
Pulse el botón para encender la unidad, o para pasar la unidad al modo de espera. (Para apagar completamente la unidad, debe desconectar el cable de alimentación de CA.)
- 2. Botones de RED / GREEN / BLUE / YELLOW**
Púselo para activar las teclas de atajo en algunas funciones de BD-video. Cuando se despliega la lista de archivos, presione para cambiar las páginas.
- 3. Botón TOP MENU**
Blu-ray Disc™: Púselo para mostrar el menú superior.
DVD: Púselo para mostrar el menú de títulos.
- 4. Botones de ▲/▼/◀/▶**
Púselos para seleccionar elementos o configuraciones.
- 5. Botón HOME**
Púselo para mostrar el menú de inicio.
- 6. Botón ◀◀ (reverso)**
Durante la reproducción, púselo para invertir rápido la reproducción.
- 7. Botón ▶▶ (reproducir)***
Púselo para iniciar o reanudar la reproducción.

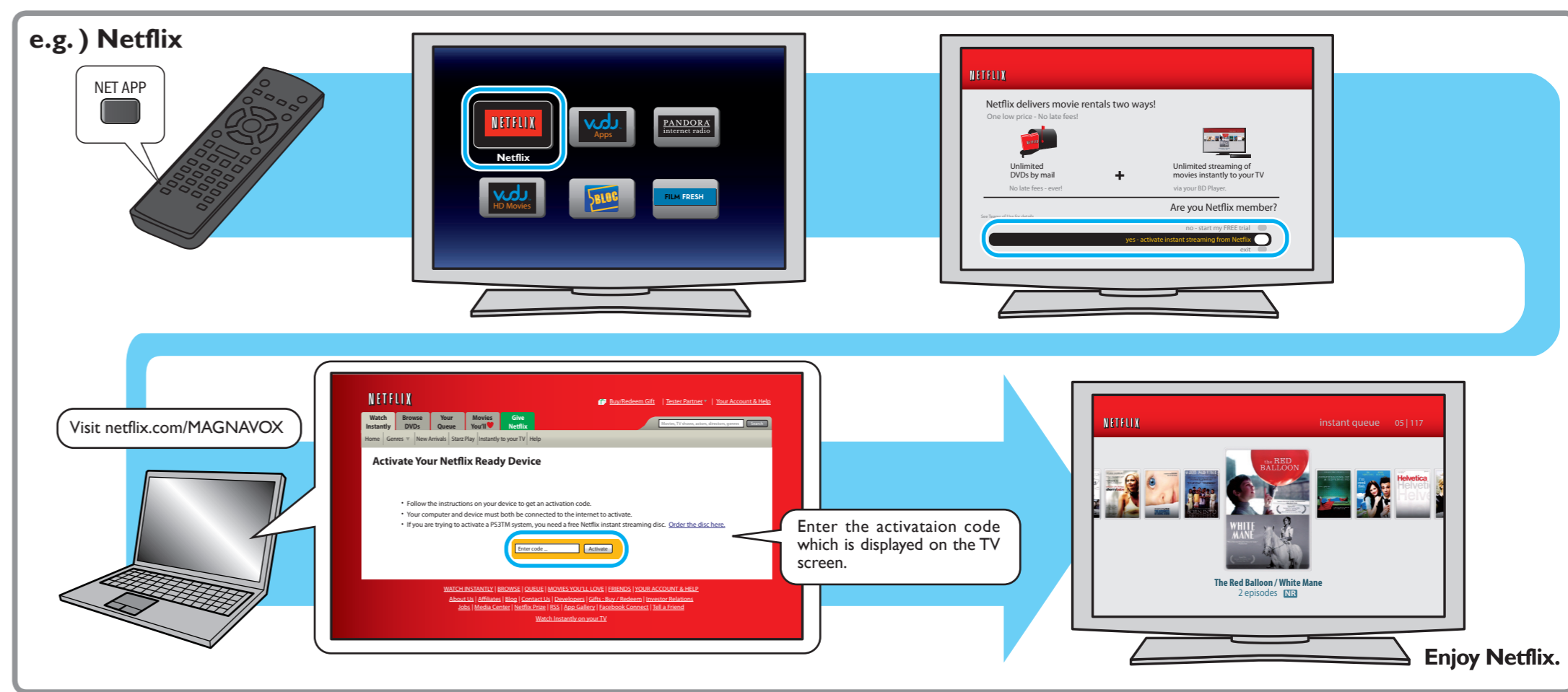
- 8. Botón ◀◀ (saltar)**
Durante la reproducción, púselo una vez para volver al comienzo del título, capítulo, pista o archivo actual. Durante la reproducción, pulse dos veces sobre la tecla para volver al título, capítulo, pista o archivo anterior. Durante la reproducción de archivos JPEG, púselo para volver al archivo anterior.
- 9. Botón ■ (detener)**
Púselo para detener la reproducción.
- 10. Botones numéricos**
Púselos para seleccionar un capítulo durante la reproducción. Púselos para introducir números en el campo de entrada.
- 11. Botón SEARCH**
Púselo para mostrar el menú de búsqueda.
- 12. Botón NET APP**
Púselo para visualizar el menú de aplicación de la red.
- 13. Botón OPEN/CLOSE** *
Púselo para cerrar o abrir la bandeja para discos.
- 14. Botón POP MENU/MENU**
Blu-ray Disc™: Púselo para mostrar el menú emergente.
DVD: Púselo para mostrar el menú del disco.
- 15. Botón OK**
Púselo para confirmar o seleccionar elementos de menú.
- 16. Botón RETURN**
Púselo para volver a la pantalla de funciones o menú mostrado anteriormente.

- 17. Botón ▶▶ (adelantar)**
Durante la reproducción, púselo para avanzar rápido la reproducción. Cuando la reproducción esté en pausa, púselo para avanzar lentamente la reproducción.
- 18. Botón ▶▶▶ (saltar)**
Durante la reproducción, púselo para saltar al siguiente capítulo, pista o archivo. Cuando la reproducción esté en modo de pausa, púselo para avanzar la reproducción imagen a imagen.
- 19. Botón || (pausar)**
Púselo para pausar la reproducción.
- 20. Botón DISPLAY**
Púselo para visualizar el menú desplegable en pantalla.
- 21. Botón REPEAT**
Presione para seleccionar el modo de repetición.
- 22. Botón SUBTITLE**
Púselo para seleccionar los subtítulos de un disco.
- 23. Botón AUDIO**
Púselo para seleccionar el canal de sonido (como idiomas de sonido) de un disco.
- 24. Botón MODE**
Durante la reproducción, púselo para visualizar el menú de reproducción.
- 25. Botón CLEAR**
Púselo para borrar la información una vez que se ha introducido.

Nota

- Cuando la unidad recibe una señal del control remoto, Indicador del STANDBY/ON parpadea en el panel delantero.

ACTIVATING NETWORK FEATURES



The image of the menu screen may change without notice. For other network applications, please see the Online Manuals for details.

Network operations

You are required to set up an account before using the following features. Please visit the links below by PC before use.



Visit www.vudu.com

Visit www.blockbuster.com/auth/login

Visit netflix.com/MAGNAVOX



Visit filmfresh.roxionow.com/Login

Visit www.pandora.com/magnavox

See the Online Manual for details: www.MAGNAVOX.com

See the Online Manual for details: www.MAGNAVOX.com

